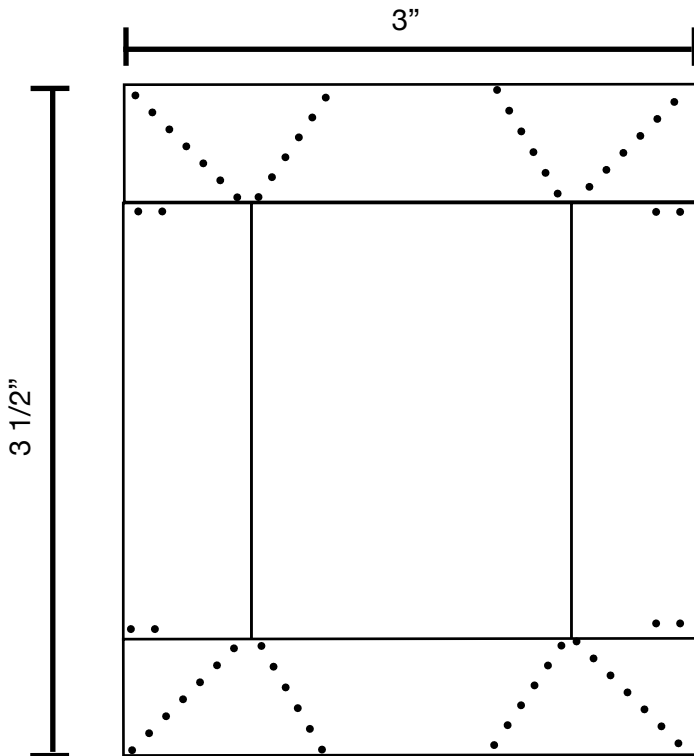




**Bottom Box of Matchbox**



..... cut line

**Directions**

Start with Bottom Box

1. Cut 3 1/2" x 3" piece of wrapping paper
2. Make all appropriate cuts as seen in diagram
3. Fold and glue using glue stick the long sides and then the adjacent corner triangles
4. Fold and glue short sides

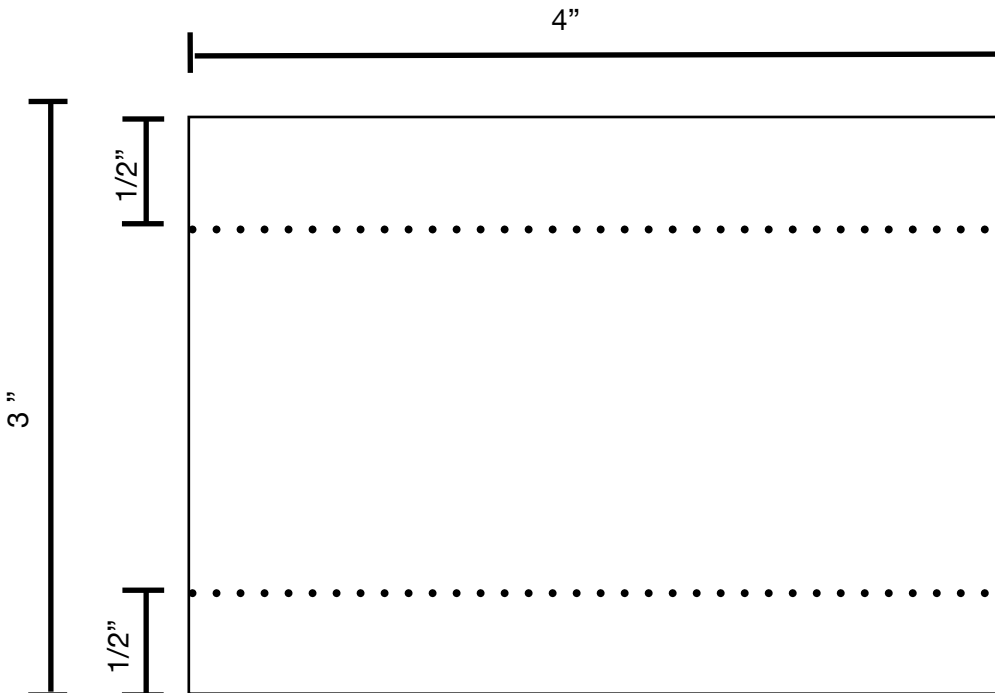
Wrapping the Exterior of Matchbox

1. Cut 4" x 3" piece of wrapping paper
2. Fold a 1/2" on both long sides
3. Wrap and glue around matchbox

Embellishments

1. Punch hole in top
2. Make knot in ribbon & pull through hole (the knot will be inside the box)
3. Put on a bow or ribbon around it
4. Write on small pieces of paper a few reminders of who you are in Christ
5. Close it and put it on your Christmas tree as a life reminder of our gifts in Christ

**Wrap around Exterior of Matchbox**



..... fold line